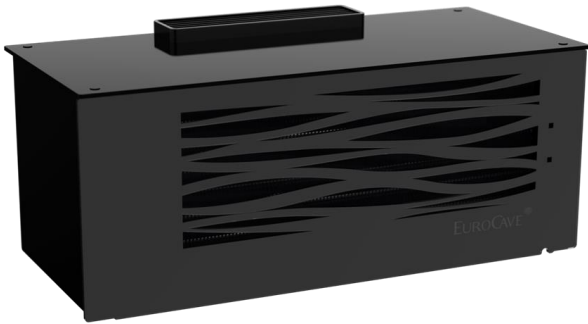


TAHOMA

Wine cellar conditioner  
Small areas from 2 to 20 m³



Ref. CCTAHO-230V

GENERAL FEATURES

|                               |  |
|-------------------------------|--|
| Dimensions external unit (mm) | H 706 x L 452 x W 334                  |
| Dimensions packaged (mm)      | H 700 x L 530 x W 400                  |
| Dimensions internal unit (mm) | H 295 x L 693 x W 310                  |
| Dimensions packaged (mm)      | H 402 x L 800 x I 400                  |
| Net weight (kg)               | 39 (ext) + 9 (int)                     |
| weight packaged(kg)           | 30 (ext) + 16 (int)                    |
| Electric power (W)            | 230V-50Hz                              |
| Refrigerating power (W)       | 440*                                   |
| Electric power (W)            | 564                                    |
| Heat release (W)              | 1 420                                  |
| Refrigerant fluid             | R290 (ext.)/H2O (int.)<br>30L capacity |
| External temperature range    | -8°C**/ +35°C (17,6°F/95°F)            |
| Sound emission Inner unit     | 50-56-60 dB(A)                         |
| Speed 2-4-6                   |  |
| Sound emission Outer unit     | 62-63 dB(A)                            |
| Pump inactive - active        |  |

TECHNOLOGY

- 2 units: internal unit, external unit
- With a closed water circuit
- Manual hygrometry management with condensate water (autonomous management solution, optional)

SPECIFICITIES

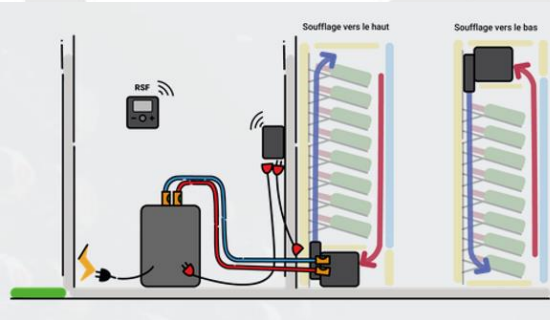
COMPACT DESIGN

- Adapted to small spaces from 2m³ up to 20m³ .  
Compatible for environments such as cabinet / showcase

EQUIPMENT & FINISHES

- Tahoma cellar conditioner is made of: internal unit, external unit, connector kit
- Connector kit: 4-8-12-16m
- Wireless remote control. Distance monitoring of the wine room.  
*Temperature settings and display from 4 to 18°C – 39-64°F*  
*(Reco 8-18°C – 46-64°F)*  
*Humidity display and adjustment (optional)*
- 3 speeds (4 – 6 – 8): to manage the right ratio between “power/ volume/ acoustic level” Default speed= 6
- Compatible accessories: anti-freeze liquid -18°C/0°F (20L), wall mounting support for inner unit, wall mounting support for outer unit, black lower covering for inner unit, draining pump and connector for humidifier (autonomous hygrometry management with setting adjustable from 20 to 80%. Recommended hygrometry setting between 60 and 75%)
- PMMA plastic cladding – Glossy black
- Removable front panel – magnetised
- Heat exchangers – Epoxy black painting

INSTALLATION



4-STEP INSTALLATION

- Blowing downwards or upwards.*
- 1-Connection using electric and hydraulic connectors (Connection kit supplied with the appliance. Choice of 4, 8, 12 or 16 m)
  - 2-Filling of the iced water loop (30L)
  - 3-Turning on the installation
  - 4-Starting and adjusting using the remote control

\*Default setting = 12°C-54°F/ speed 4 \*\*-8°C or +5°C depending on the liquid used