

5 YEAR  
WARRANTY

ORIGINE  
FRANCE  
GARANTIE  
BYCcert. 4010761



V-INSP-S  
Maturing cabinet

Built-in and Flush-fitted – Integrated glass door  
1-temperature



Sliding shelf  
(6 bottles)  
ACMSIW / ACMSIB



Wine service area  
(11 bottles)  
ACMSERVW / ACMSERVB



Storage shelf  
(up to 22 bottles)  
AXIHW / AXIHB



Half shelf  
(5 bottles)  
ACMSI-DEMI

CONFIGURATIONS

Premium Pack bottle capacity <sup>1</sup>	Service Pack bottle capacity <sup>1</sup>	Access Pack bottle capacity <sup>1</sup>
29	28	30
4 sliding shelves (+grid)	2 sliding shelves 1 half shelf 1 Wine service area	1 sliding shelf 1 storage shelf (+grid)

TECHNICAL FEATURES

REGULATION

- On/Off/Standby of the display button
- Electronic regulation
- Temperature setting range between 5°C and 20°C
- Electronic external display and settings
- LED screen
- Backlit capacitive keys
- Visual and/or sound alarms in case of:
  - Temperature dysfunction (sound and visual)
  - Hygrometry dysfunction (visual)
  - Sensor fault (sound and visual)
  - Hygrometry limit (visual)
  - Open door (sound and visual)
  - Need to replace charcoal filter (visual)
- Automatic defrost
- Frost protection thermostat (double protection)

HOT – COLD – INSULATION TECHNOLOGIES

Cold production:	<ul style="list-style-type: none"><li>• Static</li><li>• Compressor R600a</li></ul>
Cords:	<ul style="list-style-type: none"><li>• CE/UK/AU/CH/US</li></ul>
Heat production:	<ul style="list-style-type: none"><li>• Heating element</li></ul>
Heat release:	<ul style="list-style-type: none"><li>• Automatic, adjustable threshold</li></ul>
Inner material:	<ul style="list-style-type: none"><li>• Stucco aluminum</li></ul>
Exterior coating material:	<ul style="list-style-type: none"><li>• HDF (High Density Fiber) melamine-faced panels</li></ul>
Insulation type:	<ul style="list-style-type: none"><li>• Injected polyurethane foam (59mm)</li></ul>

GENERAL FEATURES

	Integrated glass
Gross weight packaged (kg)	61,2
Empty net weight (kg) <sup>2</sup>	52,7
Dimensions H x W x D (mm)	810-880 x 594 <sup>3</sup> x 590
Dimensions packaged H x W x D (mm)	980 x 645 x 630

EQUIPEMENT & ACCESSOIRES

EQUIPMENT

- Reversible integrated glass door with soft close and door stop
- Max thickness of the door panel : 20 mm
- Max weight of the door panel: 12 kg
- Inner lighting : light strip and 2 LED (3 options: permanent, open door, disabled)
- Charcoal filter
- 4 adjustable feet
- Humidity cartridge

ACCESSORIES

- Sliding shelves with Mains du Sommelier, open / close locking notch, setting of the Main du Sommelier at the front of the shelf
- 6 removable bottles identifiers per sliding shelf
- 1 erasable felt-tip marker
- 1 microfiber cloth
- 1 EuroCave key ring

ENERGY EFFICIENCY & CONSUMPTION

Cords	230V-50Hz (R600a)
Type of door	Integrated glass
Energy efficiency class	A
Annual energy consumption AEC <sup>4</sup> (Kwh/year)	125
Useful volume (liters)	100
Sound emission (dB(A))	38
Ambient temperature range (°C)	12-35

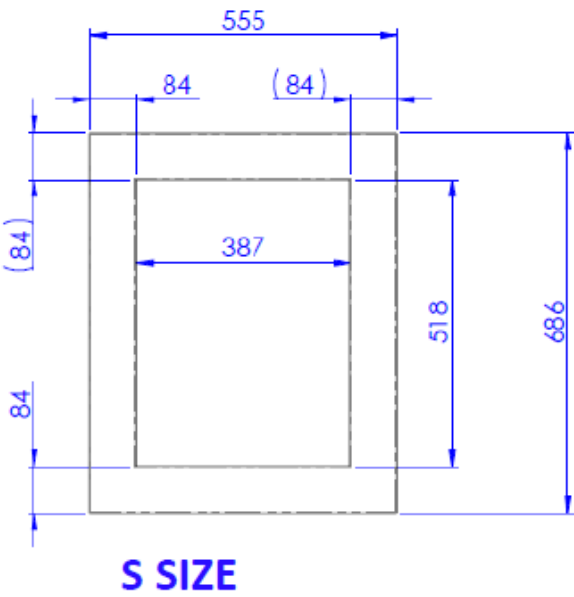
<sup>1</sup> Traditional Bordeaux bottles

<sup>2</sup> Without cladding

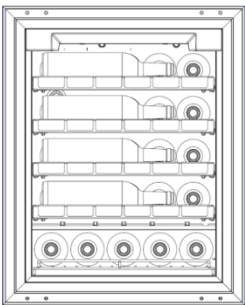
<sup>3</sup> Without fillers

<sup>4</sup> Calculation based on the result obtained over 24 hrs in standard conditions (25°C / 77°F)

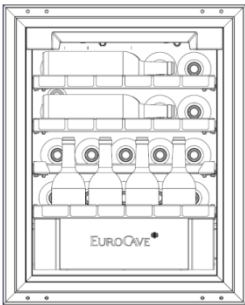
## Dimensions of the decorative panel



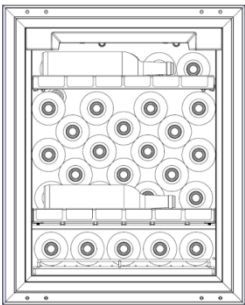
## Storage layouts



Premium Pack

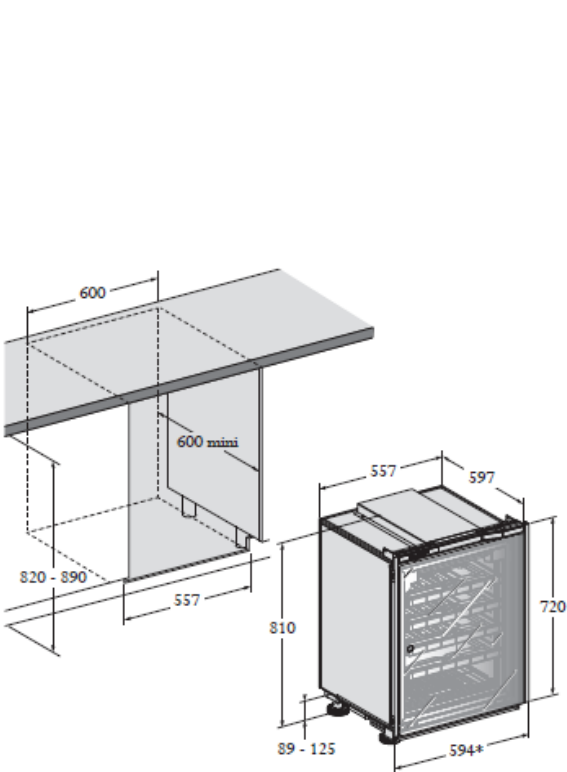


Service Pack

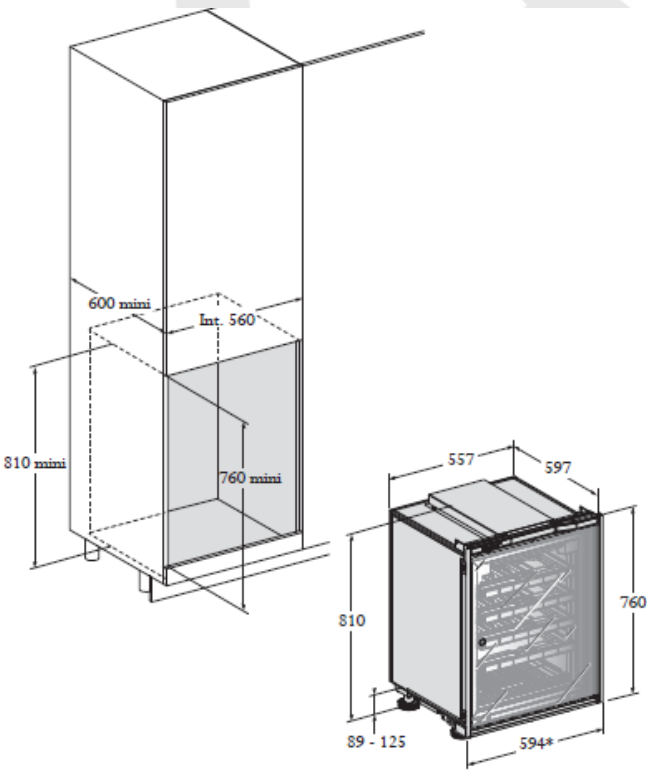


Access Pack

## Installation diagrams



Built-in



Flush-fitted